



Blue Hills
Construction

The Consul

1532 Sq. Ft. | 3 Beds | 2.5 Baths

BUILD WITH US!

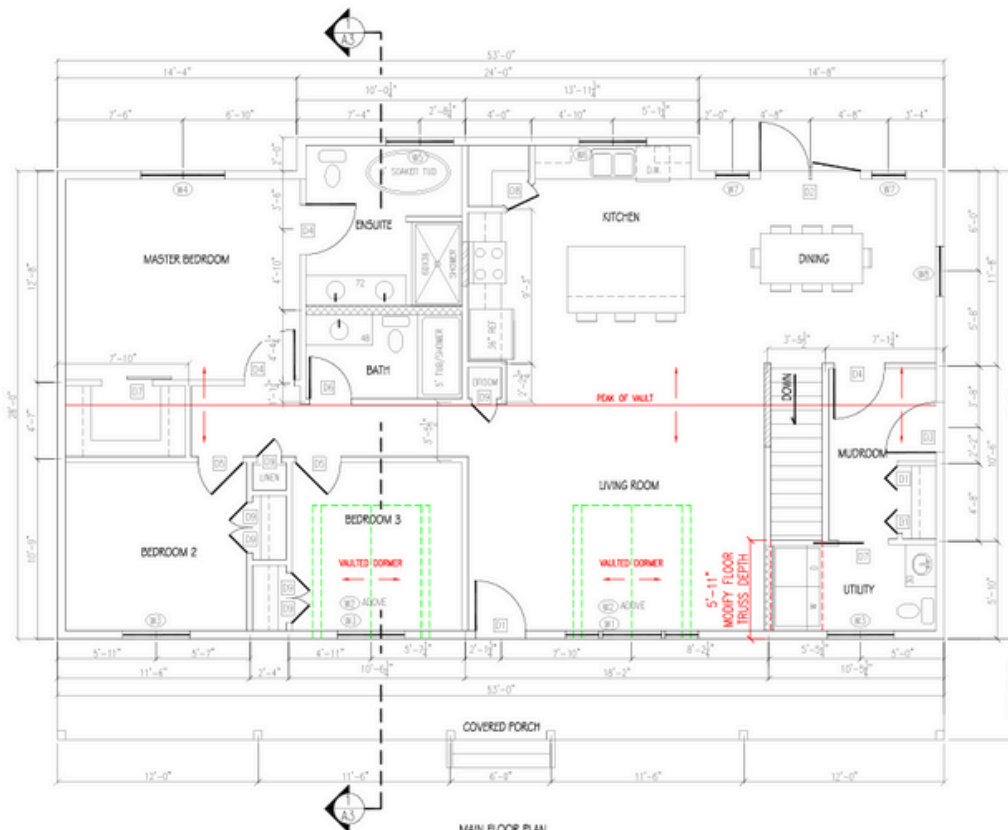
502 1ST AVE N
MAPLE CREEK, SK
1-306-206-0836

WWW.BLUEHILLSCONSTRUCTION.CA



Quick Facts

- 1532 sq. ft
- 28' X 53'
- 3 Beds
- 2.5 Baths
- Vaulted Ceilings
- 6' Front Overhang



MAIN FLOOR PLAN
SCALE: 3/16" = 1'-0"
1532 SQ. FT.

DOOR SCHEDULE		
NUMBER	SIZE	TYPE
001	36" x 80"	EXTERIOR DOOR W/ FULL INSET
002	36" x 80"	INSULATED STEEL GARDEN DOORS
003	36" x 80"	INSULATED STEEL DOOR
004	36" x 80"	INSULATED DOOR
005	36" x 80"	INSULATED DOOR
006	36" x 80"	INSULATED DOOR
007	36" x 80"	INSULATED DOOR
008	36" x 80"	INSULATED DOOR
009	36" x 80"	INSULATED DOOR
010	36" x 80"	INSULATED DOOR
011	36" x 80"	INSULATED DOOR
012	36" x 80"	INSULATED DOOR
013	36" x 80"	INSULATED DOOR
014	36" x 80"	INSULATED DOOR
015	36" x 80"	INSULATED DOOR
016	36" x 80"	INSULATED DOOR
017	36" x 80"	INSULATED DOOR
018	36" x 80"	INSULATED DOOR
019	36" x 80"	INSULATED DOOR
020	36" x 80"	INSULATED DOOR
021	36" x 80"	INSULATED DOOR
022	36" x 80"	INSULATED DOOR
023	36" x 80"	INSULATED DOOR
024	36" x 80"	INSULATED DOOR
025	36" x 80"	INSULATED DOOR
026	36" x 80"	INSULATED DOOR
027	36" x 80"	INSULATED DOOR
028	36" x 80"	INSULATED DOOR
029	36" x 80"	INSULATED DOOR
030	36" x 80"	INSULATED DOOR
031	36" x 80"	INSULATED DOOR
032	36" x 80"	INSULATED DOOR
033	36" x 80"	INSULATED DOOR
034	36" x 80"	INSULATED DOOR
035	36" x 80"	INSULATED DOOR
036	36" x 80"	INSULATED DOOR
037	36" x 80"	INSULATED DOOR
038	36" x 80"	INSULATED DOOR
039	36" x 80"	INSULATED DOOR
040	36" x 80"	INSULATED DOOR
041	36" x 80"	INSULATED DOOR
042	36" x 80"	INSULATED DOOR
043	36" x 80"	INSULATED DOOR
044	36" x 80"	INSULATED DOOR
045	36" x 80"	INSULATED DOOR
046	36" x 80"	INSULATED DOOR
047	36" x 80"	INSULATED DOOR
048	36" x 80"	INSULATED DOOR
049	36" x 80"	INSULATED DOOR
050	36" x 80"	INSULATED DOOR
051	36" x 80"	INSULATED DOOR
052	36" x 80"	INSULATED DOOR
053	36" x 80"	INSULATED DOOR
054	36" x 80"	INSULATED DOOR
055	36" x 80"	INSULATED DOOR
056	36" x 80"	INSULATED DOOR
057	36" x 80"	INSULATED DOOR
058	36" x 80"	INSULATED DOOR
059	36" x 80"	INSULATED DOOR
060	36" x 80"	INSULATED DOOR
061	36" x 80"	INSULATED DOOR
062	36" x 80"	INSULATED DOOR
063	36" x 80"	INSULATED DOOR
064	36" x 80"	INSULATED DOOR
065	36" x 80"	INSULATED DOOR
066	36" x 80"	INSULATED DOOR
067	36" x 80"	INSULATED DOOR
068	36" x 80"	INSULATED DOOR
069	36" x 80"	INSULATED DOOR
070	36" x 80"	INSULATED DOOR
071	36" x 80"	INSULATED DOOR
072	36" x 80"	INSULATED DOOR
073	36" x 80"	INSULATED DOOR
074	36" x 80"	INSULATED DOOR
075	36" x 80"	INSULATED DOOR
076	36" x 80"	INSULATED DOOR
077	36" x 80"	INSULATED DOOR
078	36" x 80"	INSULATED DOOR
079	36" x 80"	INSULATED DOOR
080	36" x 80"	INSULATED DOOR
081	36" x 80"	INSULATED DOOR
082	36" x 80"	INSULATED DOOR
083	36" x 80"	INSULATED DOOR
084	36" x 80"	INSULATED DOOR
085	36" x 80"	INSULATED DOOR
086	36" x 80"	INSULATED DOOR
087	36" x 80"	INSULATED DOOR
088	36" x 80"	INSULATED DOOR
089	36" x 80"	INSULATED DOOR
090	36" x 80"	INSULATED DOOR
091	36" x 80"	INSULATED DOOR
092	36" x 80"	INSULATED DOOR
093	36" x 80"	INSULATED DOOR
094	36" x 80"	INSULATED DOOR
095	36" x 80"	INSULATED DOOR
096	36" x 80"	INSULATED DOOR
097	36" x 80"	INSULATED DOOR
098	36" x 80"	INSULATED DOOR
099	36" x 80"	INSULATED DOOR
100	36" x 80"	INSULATED DOOR

NOTE:
- DOOR AND WINDOW SIZES ARE INSIDE CADING. REFER TO
SUPPLIER SPECIFICATIONS FOR ROUGH DIMENSIONS.
- ALL WINDOWS SHALL BE TRIPLE PANE.

NOTE:
- THESE DRAWINGS ARE PICTORIAL. FOR LAYOUT PURPOSES ONLY.
- NO ATTEMPT HAS BEEN MADE TO DETERMINE SIZES OF STRUCTURAL MEMBERS.
- ALL STRUCTURAL DETAIL SHALL BE DETERMINED BY THE BUILDER OR A STRUCTURAL ENGINEER.



Blue Hills
Construction

The Consul

502 1ST AVE N
MAPLE CREEK, SK
1-306-206-0836

1384 Sq. Ft. | 3 Beds | 2.5 Baths

BUILD WITH US!

General Specifications

SUPERIOR CONSTRUCTION

- Engineered Open Web Joist Floor System- Standard
- 3/4" T&G Floor Sheathing Glued and Screwed
- 7/16" Sheathing on Roof and Exterior Walls
- Insulation R Values Meet/exceed provincial building codes
- 6 mil Poly Vapor Barrier
- Engineered Roof Trusses @ 24" O.C.
- 2"x6" Exterior Walls
- 2"x4" Interior Walls

MAINTENANCE FREE EXTERIOR

- Whole House Wrap
- Engineered Wood Siding- Standard
- 24" Vented Soffit
- Owens Corning Duration Shingles
- 6" Metal Soffit and Fascia
- 36" Decorative Insulated Entry Doors
- Weiser Keyed Alike Deadbolts
- White PVC Triple Pane Windows
- Ledger Boards for Future Decks

TASTEFUL INTERIORS

- 5mil Vinyl Luxury Plank Flooring - Standard
- 1/2" Primed and Painted Drywall with Chamfered Corners
- Vaulted Ceilings Throughout
- Live Dormers
- Adjustable Wire Racking in bedroom closets
- Pot Lights and Ceiling lights in all rooms
- Lever Style Door Handles
- Custom Boot Cubby in Mudroom- Plan Specific



COMPLETE CUSTOM KITCHEN

- Custom Cabinets w/Adjustable Shelving
- Crown Molding on Cabinets
- Soft Close Doors and Drawers
- Dove Tail Drawer Boxes- Standard
- Double Undermount or Farmhouse Sink
- Single Lever Pull Out Faucet w/Veggie Sprayer
- Quartz Counter Top with Backsplash- Standard
- Drawers in Lower Cabinets Where Possible
- Rangehood and Fan
- Center Island - Plan Specific

SPACIOUS BATHROOMS

- Free-standing bathtub and Separate Tiled Shower Unit in Ensuite- Plan specific
- One-Piece Tub/Shower Unit in Main Bath
- Toilets Standard or Comfort Height
- Pre-Finished Vanities with Quartz Countertops
- Toilet Paper and Towel Holders

UTILITIES

- 200 Amp Electrical Panel Mounted in Wall for Basement Hookup
- Wired CO/Smoke Detectors as per code
- GFI Protected Receptables where required
- Pot Lights at All Exterior Doors
- 5 Wire Rough In for Thermostat
- All PEX Waterlines Stubbed in Floor Cavity
- All Plumbing Stubbed in Floor Cavity
- Register and Air Return Rough-In with Covers

