



The Admiral

502 1ST AVE N
MAPLE CREEK, SK
1-306-206-0836

Blue Hills
Construction

1876 Sq. Ft. | 3 Beds | 2.5 Baths

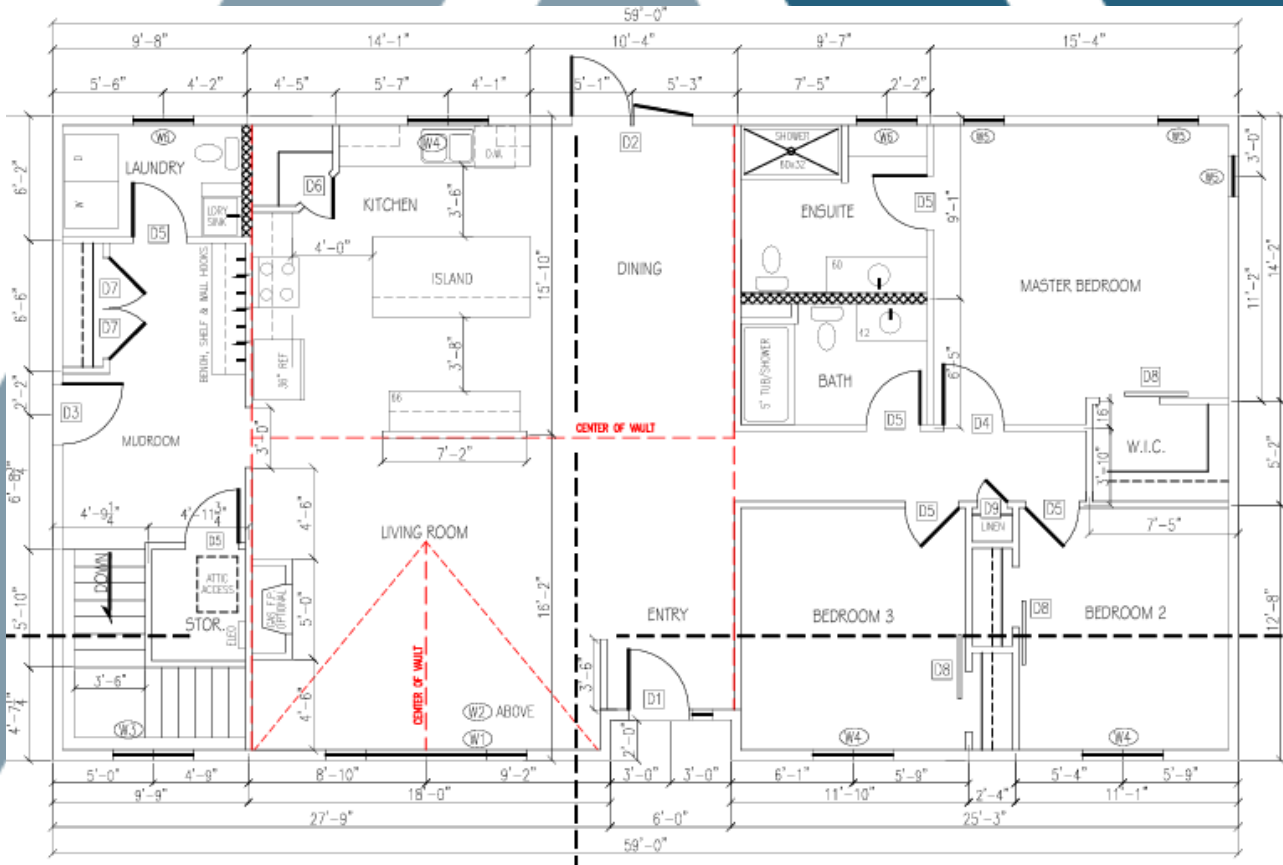
BUILD WITH US!

WWW.BLUEHILLSCONSTRUCTION.CA



Quick Facts

- 1876 sq. ft
- 59' X 32'
- 3 Beds
- 2.5 Baths





The Admiral

502 1ST AVE N
MAPLE CREEK, SK
1-306-206-0836

Blue Hills
Construction

1876 Sq. Ft. | 3 Beds | 2.5 Baths

BUILD WITH US!

General Specifications

SUPERIOR CONSTRUCTION

- Engineered Open Web Joist Floor System- Standard
- 3/4" T&G Floor Sheathing Glued and Screwed
- 7/16" Sheathing on Roof and Exterior Walls
- Insulation R Values Meet/Exceed Provincial Building Codes
- 6 mil Poly Vapor Barrier
- Engineered Roof Trusses @ 24" O.C.
- 2"x6" Exterior Walls
- 2"x4" Interior Walls

MAINTENANCE FREE EXTERIOR

- Whole House Wrap
- Engineered Wood Siding- Standard
- 24" Vented Soffit
- Owens Corning Duration Shingles
- 6" Metal Soffit and Fascia
- 36" Decorative Insulated Entry Doors
- Weiser Keyed Alike Deadbolts
- White PVC Triple Pane Windows
- Ledger Boards for Future Decks

TASTEFUL INTERIORS

- 5mil Vinyl Luxury Plank Flooring - Standard
- 1/2" Primed and Painted Drywall with Chamfered Corners
- Vaulted Ceiling Throughout
- Live Dormers
- Adjustable Wire Racking in bedroom closets
- Pot Lights and Ceiling lights in all rooms
- Lever Style Door Handles
- Custom Boot Cubby in Mudroom- Plan Specific

COMPLETE CUSTOM KITCHEN

- Custom Cabinets w/Adjustable Shelving
- Crown Molding on Cabinets
- Soft Close Doors and Drawers
- Dove Tail Drawer Boxes- Standard
- Double Undermount or Farmhouse Sink
- Single Lever Pull Out Faucet w/Veggie Sprayer
- Quartz Counter Top with Backsplash- Standard
- Drawers in Lower Cabinets Where Possible
- Rangehood and Fan
- Center Island - Plan Specific

SPACIOUS BATHROOMS

- Free-standing bathtub and Separate Tiled Shower Unit in Ensuite- Plan specific
- One-Piece Tub/Shower Unit in Main Bath
- Toilets Standard or Comfort Height
- Pre-Finished Vanities with Quartz Countertops
- Toilet Paper and Towel Holders

UTILITIES

- 200 Amp Electrical Panel Mounted in Wall for Basement Hookup
- Wired CO/Smoke Detectors as per code
- GFI Protected Receptables where required
- Pot Lights at All Exterior Doors
- 5 Wire Rough In for Thermostat
- All PEX Waterlines Stubbed in Floor Cavity
- All Plumbing Stubbed in Floor Cavity
- Register and Air Return Rough-In with Covers

