



The Southwood

502 1ST AVE N
MAPLE CREEK, SK
1-306-206-0836

Blue Hills
Construction

1384 Sq. Ft. | 2 Beds | 2 Baths

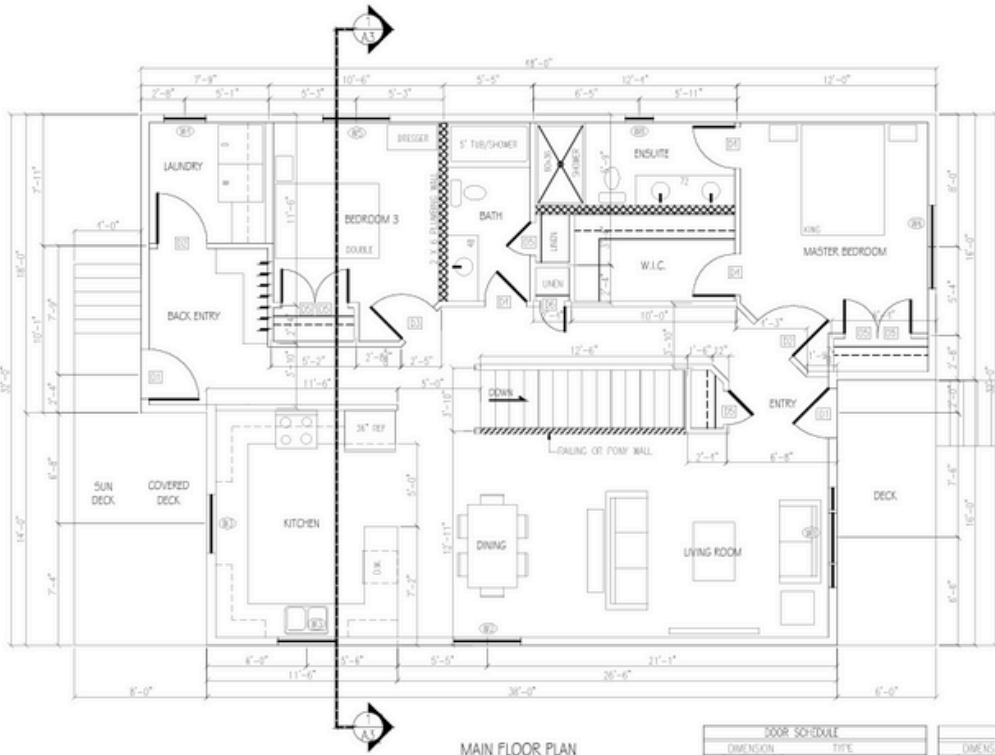
BUILD WITH US!

WWW.BLUEHILLSCONSTRUCTION.CA



Quick Facts

- 1384 sq. ft
- 32' X 48'
- 2 Beds
- 2 Baths
- 8' Ceiling
- Open Concept



MAIN FLOOR PLAN
SCALE: 3/16" = 1'-0"
1384 SQ. FT.

DOOR SCHEDULE	
DIMENSION	NOTE
D1 36" x 80"	EXT. DOOR W/ 23/32" INSUL.
D2 36" x 80"	INTERIOR DOOR
D3 32" x 80"	INTERIOR DOOR
D4 30" x 80"	INTERIOR DOOR
D5 24" x 80"	CLOSET DOOR
D6 18" x 80"	CLOSET DOOR

WINDOW SCHEDULE	
DIMENSION	NOTE
W1 72" x 80"	FIXED CASSETTE/14" COMP. GL. ENL.
W2 78" x 80"	FIXED CASSETTE
W3 12" x 12"	AWNING
W4 30" x 48"	CASSETTE
W5 24" x 48"	FIXED CASSETTE
W6 30" x 48"	FIXED CASSETTE
W7 24" x 30"	AWNING W/ OSCURE GLASS

NOTE:
- ROOM AND WINDOW SIZES ARE INSIDE CASING. REFER TO SUPPLIER SPECIFICATIONS FOR ROUGH DRIVING DIMENSIONS.

NOTE:
THESE DRAWINGS ARE PICTORIAL. FOR LAYOUT PURPOSES ONLY.
NO ATTEMPT HAS BEEN MADE TO DETERMINE SIZES OF STRUCTURAL MEMBERS.
ALL STRUCTURAL DETAILS SHALL BE DETERMINED BY THE BUILDER OR A STRUCTURAL ENGINEER.



The Southwood

502 1ST AVE N
MAPLE CREEK, SK
1-306-206-0836

Blue Hills
Construction

1384 Sq. Ft. | 2 Beds | 2 Baths

BUILD WITH US!

General Specifications

SUPERIOR CONSTRUCTION

- Engineered Open Web Joist Floor System- Standard
- 3/4" T&G Floor Sheathing Glued and Screwed
- 7/16" Sheathing on Roof and Exterior Walls
- Insulation R Values Meet/Exceed Provincial Building Codes
- 6 mil Poly Vapor Barrier
- Engineered Roof Trusses @ 24" O.C.
- 2"x6" Exterior Walls
- 2"x4" Interior Walls



MAINTENANCE FREE EXTERIOR

- Whole House Wrap
- Engineered Wood Siding- Standard
- 24" Vented Soffit
- Owens Corning Duration Shingles
- 6" Metal Soffit and Fascia
- 36" Decorative Insulated Entry Doors
- Weiser Keyed Alike Deadbolts
- White PVC Triple Pane Windows
- Ledger Boards for Future Decks

COMPLETE CUSTOM KITCHEN

- Custom Cabinets w/Adjustable Shelving
- Crown Molding on Cabinets
- Soft Close Doors and Drawers
- Dove Tail Drawer Boxes- Standard
- Double Undermount or Farmhouse Sink
- Single Lever Pull Out Faucet w/Veggie Sprayer
- Quartz Counter Top with Backsplash- Standard
- Drawers in Lower Cabinets Where Possible
- Rangehood and Fan
- Center Island - Plan Specific

TASTEFUL INTERIORS

- 5mil Vinyl Luxury Plank Flooring - Standard
- 1/2" Primed and Painted Drywall with Chamfered Corners
- 9' Flat Ceiling Throughout- Standard
- Vaulted Ceiling in Living Room- Plan Specific
- Adjustable Wire Racking in bedroom closets
- Pot Lights and Ceiling lights in all rooms
- Lever Style Door Handles
- Custom Boot Cubby in Mudroom- Plan Specific

SPACIOUS BATHROOMS

- Free-standing bathtub and Separate Tiled Shower Unit in Ensuite- Plan specific
- One-Piece Tub/Shower Unit in Main Bath
- Toilets Standard or Comfort Height
- Pre-Finished Vanities with Quartz Countertops
- Toilet Paper and Towel Holders

UTILITIES

- 200 Amp Electrical Panel Mounted in Wall for Basement Hookup
- Wired CO/Smoke Detectors as per code
- GFI Protected Receptables where required
- Pot Lights at All Exterior Doors
- 5 Wire Rough In for Thermostat
- All PEX Waterlines Stubbed in Floor Cavity
- All Plumbing Stubbed in Floor Cavity
- Register and Air Return Rough-In with Covers



