



Blue Hills  
Construction

# The Enid

502 1ST AVE N  
MAPLE CREEK, SK  
1-306-206-0836

1091 Sq. Ft. | 3 Beds | 1 Bath

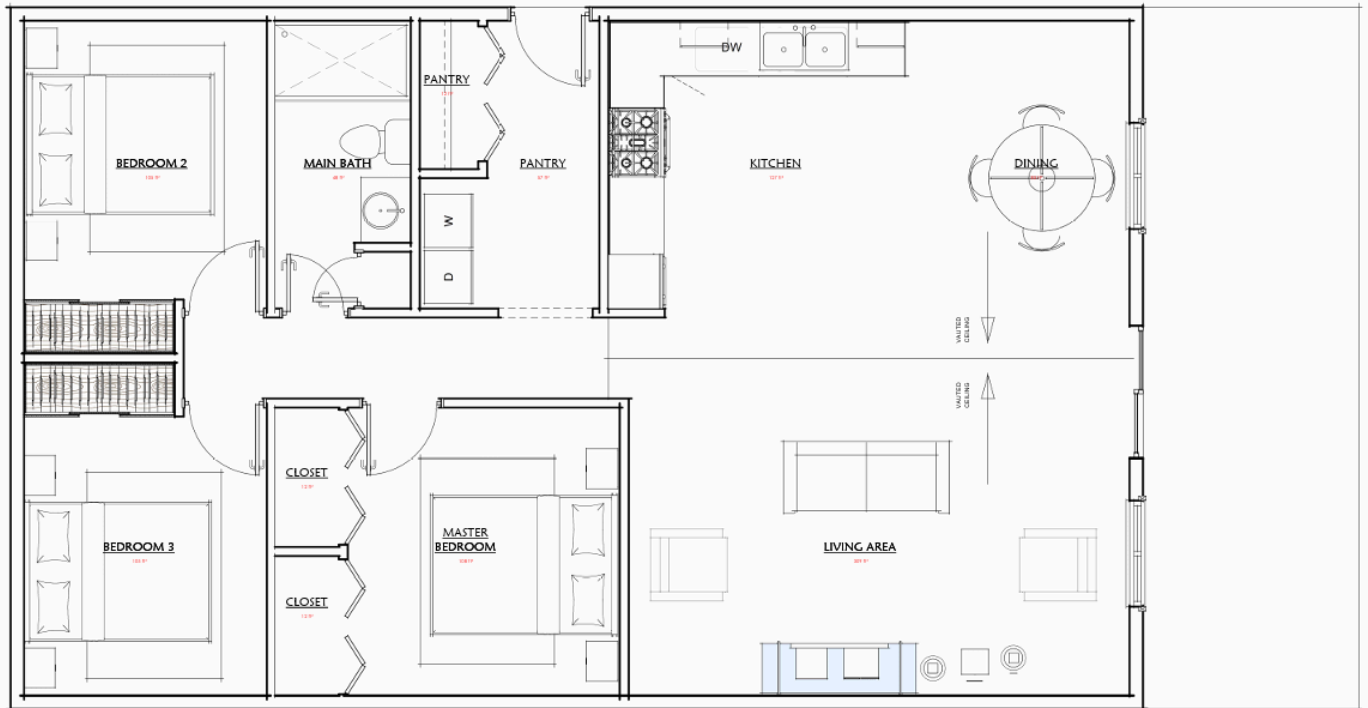
**BUILD WITH US!**

[WWW.BLUEHILLSCONSTRUCTION.CA](http://WWW.BLUEHILLSCONSTRUCTION.CA)



## Quick Facts

- 1091 sq. ft
- 26' X 50'
- 3 Beds
- 1 Bath
- Large Living Area





**Blue Hills**  
Construction

# The Enid

502 1ST AVE N  
MAPLE CREEK, SK  
1-306-206-0836

1091 Sq. Ft. | 3 Beds | 1 Baths

**BUILD WITH US!**

## General Specifications

### SUPERIOR CONSTRUCTION

- Engineered Floor System
- 3/4" T&G Floor Sheathing Glued and Screwed
- 7/16" Sheathing on Roof and Exterior Walls
- Insulation R Values Meet/exceed provincial building codes
- 6 mil Poly Vapor Barrier
- Engineered Roof Trusses @ 24" O.C.
- 2" x 6" Exterior Walls
- 2" x 4" Interior Walls

### MAINTENANCE FREE EXTERIOR

- Whole House Wrap
- Shingled Roof
- Standard Vinyl Siding
- 36" Insulated Exterior Doors
- White PVC Double Pane Windows

### TASTEFUL INTERIORS

- 5mil Vinyl Luxury Plank Flooring - Standard
- 1/2" Primed and Painted Drywall with Chamfered Corners
- 8' Flat Ceilings
- Pot Lights and Ceiling lights in all rooms
- Lever Style Door Handles
- White Door Stops behind Door Handles



### COMPLETE CUSTOM KITCHEN

- Custom Cabinets w/Adjustable Shelving
- Soft Close Doors and Drawers
- Single Lever Pull Out Faucet w/Veggie Sprayer
- Laminate Counter Top with 4" Backsplash
- Drawers in Lower Cabinets Where Possible
- Center Island - Optional

### SPACIOUS BATHROOMS

- One-Piece Tub/Shower Unit in Main Bath
- Toilets Comfort Height
- Pre-Finished Vanities with Quartz Countertops
- Toilet Paper and Towel Holders

### UTILITIES

- 100 Amp Electrical Panel Mounted in Wall for Service hookup
- Wired CO/Smoke Detectors as per code
- GFI Protected Receptables where required
- Pex Water Lines ready for service connection

